

Performance Report for: <https://karislife.com.au/>

Report generated: Mon, Oct 30, 2023 6:22 PM -0700
 Test Server Location: Vancouver, Canada
 Using: Chrome (Desktop) 117.0.0.0, Lighthouse 11.0.0

A	Performance	Structure	L. Contentful Paint	T. Blocking Time	C. Layout Shift
	100%	99%	586ms	75ms	0.04

Top Issues

IMPACT	AUDIT	
Low	Avoid an excessive DOM size <small>TBT</small>	1,057 elements
Low	Avoid enormous network payloads <small>LCP</small>	Total size was 598KB
Low	Properly size images	Potential savings of 40.2KB
Low	Avoid long main-thread tasks <small>TBT</small>	2 long tasks found
Low	Avoid non-composited animations <small>CLS</small>	68 animated elements found

Page Details



Total Page Size - 589KB



Total Page Requests - 54



HTML JS CSS IMG Video Font Other

How does this affect me?

Today's web user expects a fast and seamless website experience. Delivering that fast experience can result in increased visits, conversions and overall happiness.

As if you didn't need more incentive, **Google has announced that they are using page speed in their ranking algorithm.**

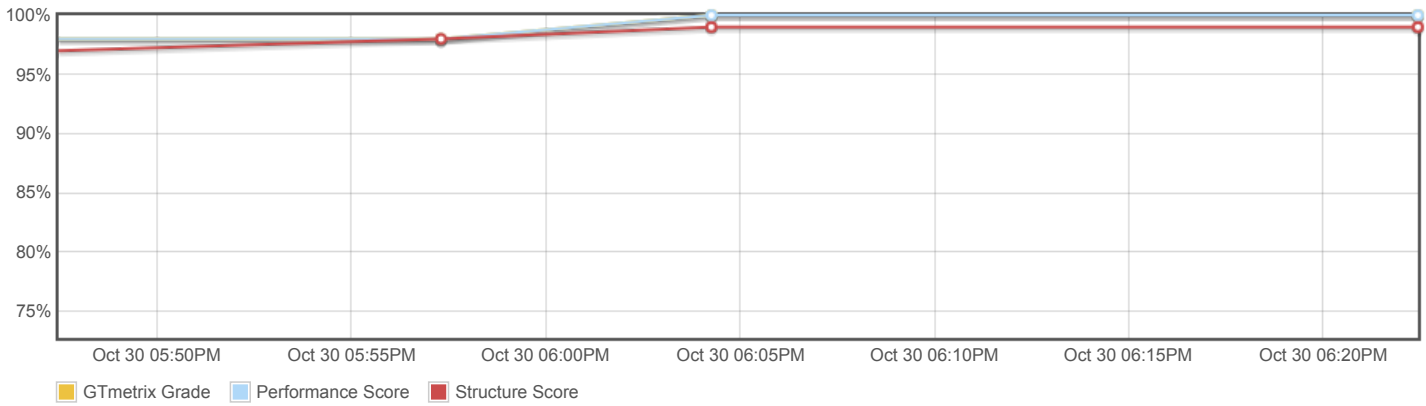
About GTmetrix

CARBON60
THE MANAGED CLOUD COMPANY

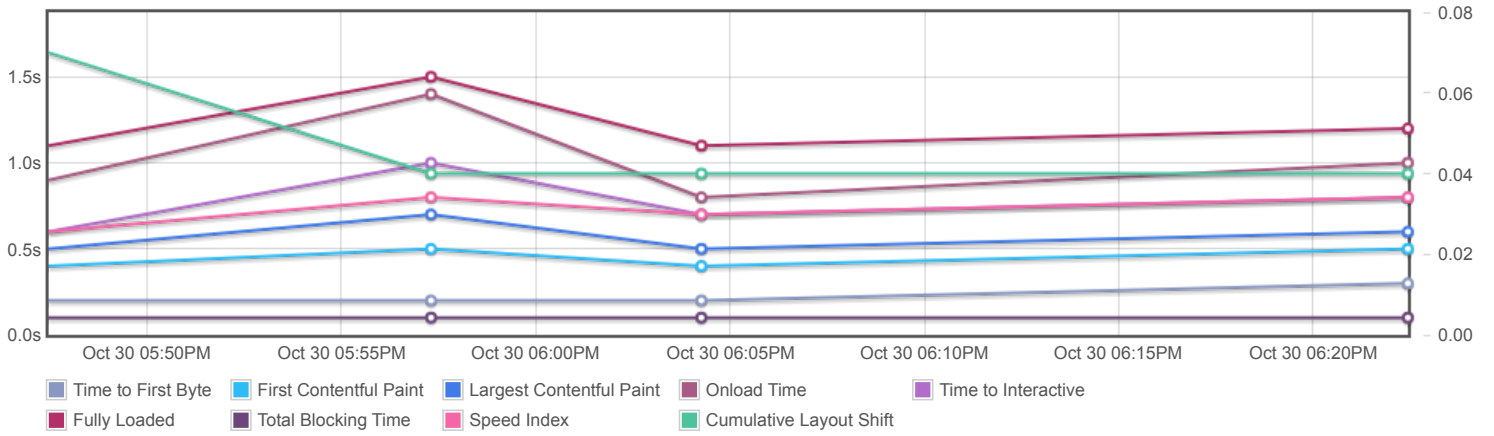
GTmetrix is developed by the good folks at Carbon60, a Canadian hosting company with over 27 years experience in web technology.

<https://carbon60.com/>

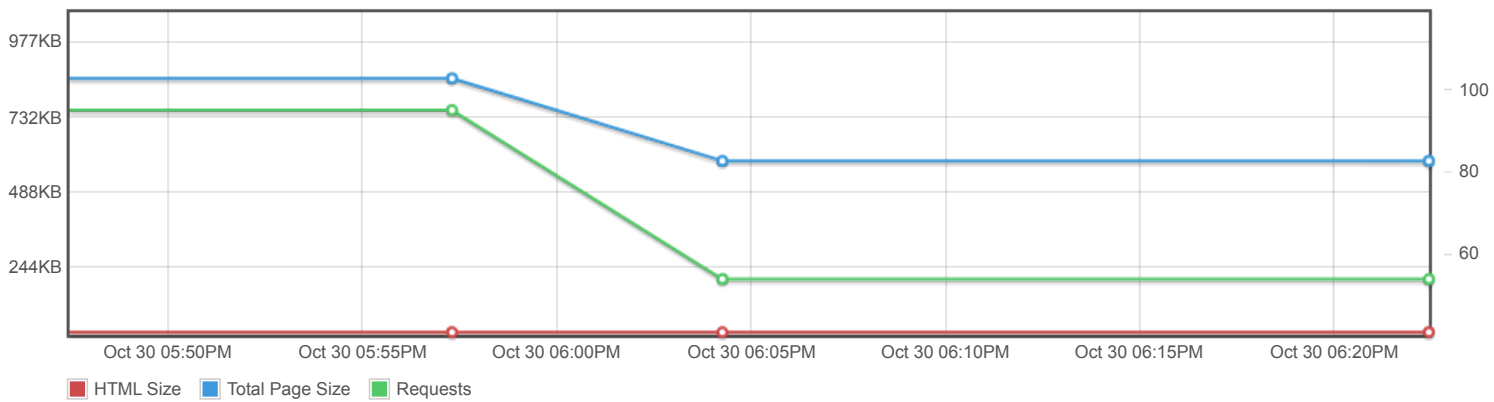
Page scores



Page metrics

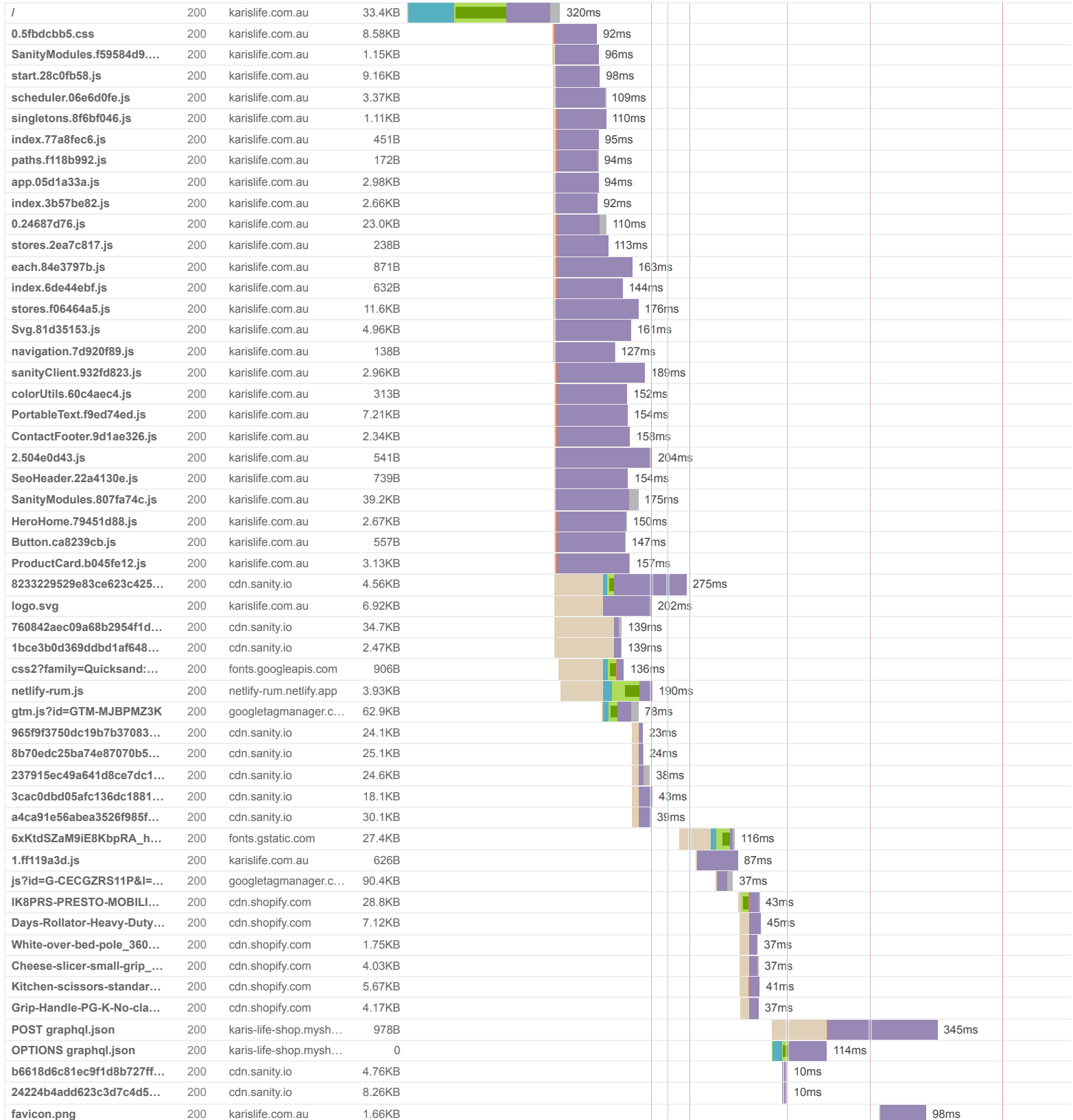


Page sizes and request counts

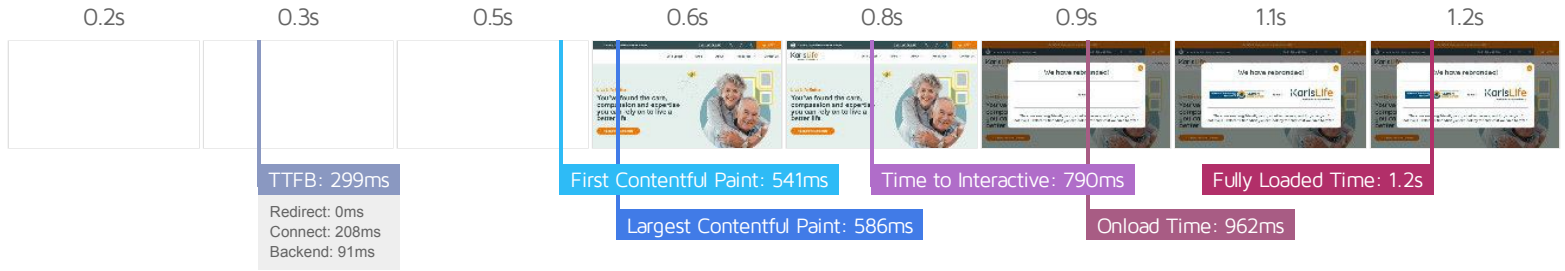


The waterfall chart displays the loading behaviour of your site in your selected browser. It can be used to discover simple issues such as 404's or more complex issues such as external resources blocking page rendering.

Aged-Care & Mobility Equipment Sydney | Karis Life



POST graphql.json	200	karis-life-shop.mysh...	1.23KB							128ms
54 Requests	589KB (1.41MB Uncompressed)	Fully Loaded 1.2s (Onload 962ms)								



Performance Metrics

<p>First Contentful Paint</p> <p>How quickly content like text or images are painted onto your page. A good user experience is 0.9s or less.</p>	<p>Good - Nothing to do here</p> <p>541ms</p>	<p>Time to Interactive</p> <p>How long it takes for your page to become fully interactive. A good user experience is 2.5s or less.</p>	<p>Good - Nothing to do here</p> <p>790ms</p>
<p>Speed Index</p> <p>How quickly the contents of your page are visibly populated. A good user experience is 1.3s or less.</p>	<p>Good - Nothing to do here</p> <p>790ms</p>	<p>Total Blocking Time</p> <p>How much time is blocked by scripts during your page loading process. A good user experience is 150ms or less.</p>	<p>Good - Nothing to do here</p> <p>75ms</p>
<p>Largest Contentful Paint</p> <p>How long it takes for the largest element of content (e.g. a hero image) to be painted on your page. A good user experience is 1.2s or less.</p>	<p>Good - Nothing to do here</p> <p>586ms</p>	<p>Cumulative Layout Shift</p> <p>How much your page's layout shifts as it loads. A good user experience is a score of 0.1 or less.</p>	<p>Good - Nothing to do here</p> <p>0.04</p>

Browser Timings

Redirect	0ms	Connect	208ms	Backend	91ms
TTFB	299ms	DOM Int.	506ms	DOM Loaded	507ms
First Paint	541ms	Onload	962ms	Fully Loaded	1.2s

IMPACT	AUDIT	
Low	Avoid an excessive DOM size <small>TBT</small>	1,057 elements
Low	Avoid enormous network payloads <small>LCP</small>	Total size was 598KB
Low	Properly size images	Potential savings of 40.2KB
Low	Avoid long main-thread tasks <small>TBT</small>	2 long tasks found
Low	Avoid non-composited animations <small>CLS</small>	68 animated elements found
Low	Avoid chaining critical requests <small>FCP LCP</small>	2 chains found
Low	Reduce unused JavaScript <small>LCP</small>	Potential savings of 100KB
N/A	Largest Contentful Paint element <small>LCP</small>	590 ms
N/A	Eliminate render-blocking resources <small>FCP LCP</small>	Potential savings of 0 ms
N/A	Reduce JavaScript execution time <small>TBT</small>	98ms spent executing JavaScript
N/A	Reduce initial server response time <small>FCP LCP</small>	Root document took 90ms
N/A	Avoid large layout shifts <small>CLS</small>	5 elements found
N/A	Minimize main-thread work <small>TBT</small>	Main-thread busy for 617ms
N/A	Reduce the impact of third-party code <small>TBT</small>	Total size was 423KB
N/A	Avoid serving legacy JavaScript to modern browsers <small>TBT</small>	
N/A	User Timing marks and measures	